



YEAR 8 KNOWLEDGE ORGANISER: What are human landscapes like in the U.K?

Click on the links to find games to help you to learn the location of the towns and cities.

https://world-geography-games.com/en/world_cities.html



<https://www.geoguessr.com/seterra/en/vgp/3229>

Key Term	Meaning
Rural	The countryside and villages.
Urban	Towns and cities.
Urbanisation	The growth of towns and cities.
Megacity	A city with a population of over 10 million people.

<https://www.geoguessr.com/seterra/en/vgp/3104>



<https://www.purposegames.com/game/cities-of-the-uk-quiz>

Urban land-use model



- Key
- Central business district (CBD)
 - Inner city
 - suburbs
 - Rural-urban fringe



Central Business District (C.B.D)

Town centre with shops and offices. Entertainment. Main bus and train stations.



Old Inner City

Terraced houses, old factories, no front gardens, on street parking. Straight roads.



Inner city redevelopment

The old housing has been knocked down and new housing built in its place.



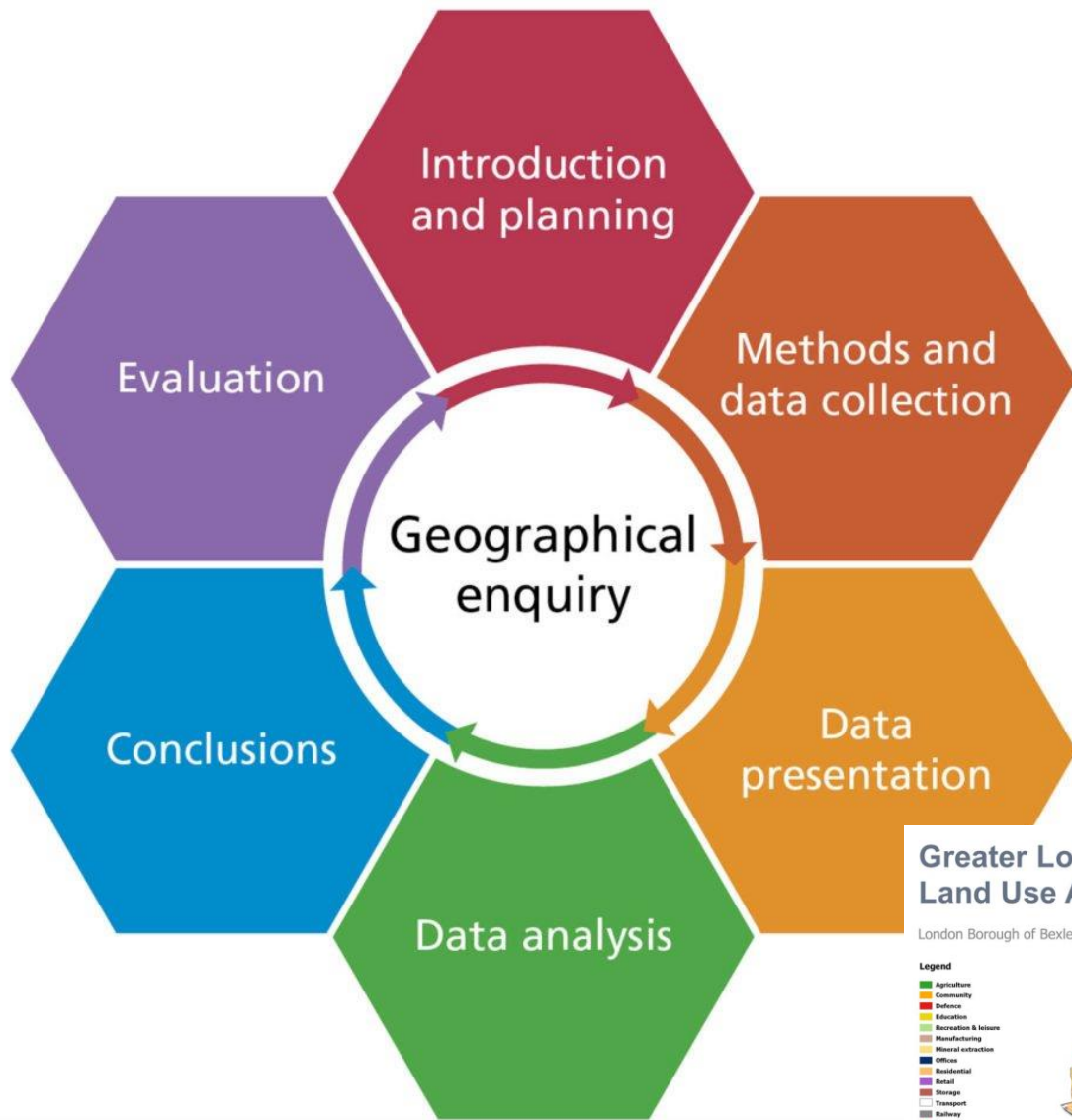
Suburbs

Semi-detached and detached houses. Curved roads. Front and back gardens. Drives and garages.



Rural-urban fringe

Where the edge of the town meets the countryside.



Code	Type of Land Use	Further information – extra letters
R	Residential	f = flat, t = terraced house, s= semi-detached house, b = bungalow, d= detached house
I	Industrial	l = light manufacturing, h= heavy industry, c = chemical, e = extraction/mining
C	Commercial	f = food, t = take-away, p = personal services, d = department stores, h=homeware & furniture, g = garage, m = market, s = specialist shop, o = office, v = vacant
E	Entertainment	h = hotel, s = sports centre, g = gym, t = theatre or cinema, b = bar, r = restaurant or café
P	Public building	e = education, l = library, h = hospital, c = place of worship, p = police station, a = ambulance station, f = fire station, w = welfare
O	Open space	f = farmland, p = park, c = cemetery, u = unused land, d = derelict building, s = sports field
T	Transport	B = bus station, t = taxi rank, c = car park, r = railway station
S	Services	f = financial, b = business, m = medical, e = estate agents, d = dental

Further letters can be added as required, or add o = other.

Please note that there are quite a lot of variations on this theme. Students could be challenged to identify a more appropriate index, or to develop their own.



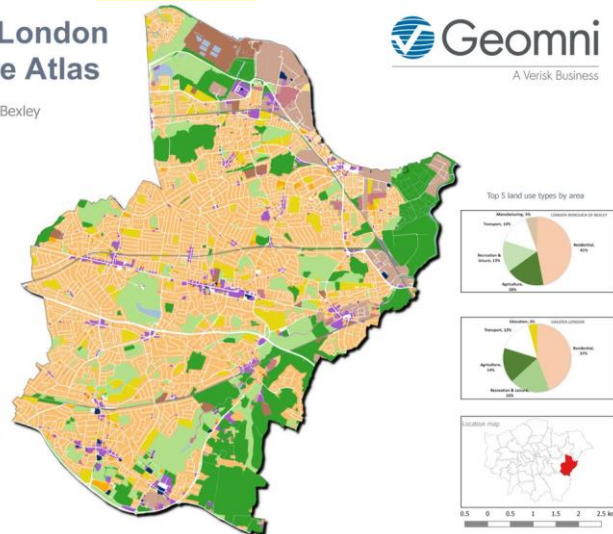
Greater London Land Use Atlas

London Borough of Bexley

- Legend**
- Agriculture
 - Community
 - Defence
 - Education
 - Recreation & leisure
 - Manufacturing
 - Mineral extraction
 - Offices
 - Residential
 - Retail
 - Storage
 - Transport
 - Railway
 - Airports
 - Unused land
 - Utility
 - Wholesale distribution
 - Water

UKMap

This highly detailed map has been created from official aerial photography and is the most accurate and up-to-date map available. It is a valuable resource for students and teachers alike. The map is available in a range of formats and can be used for a variety of purposes. It is a valuable resource for students and teachers alike. The map is available in a range of formats and can be used for a variety of purposes.



RICEPOTS is a good key to use when you are making a land-use map of the road where you live.

