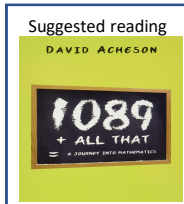


Year 9 – Reasoning with Numbers Numbers



Want to know more? Scan the QR code to visit the curriculum overview for Year 9 Maths, including topic summaries, key words, and books that you may want to read in your own time



Scan me

What do I need to be able to do?

- By the end of this unit you should be able to:
- Identify integers, real and rational numbers
 - Work with directed number
 - Solve problems with number
 - Find HCF/ LCM
 - Add/ Subtract fractions
 - Multiply/ Divide fractions
 - Write numbers in standard form

Keywords

- Integer:** a whole number that is positive or negative
Rational: a number that can be made by dividing two integers
Irrational: a number that cannot be made by dividing two integers
Inverse operation: the operation that reverses the action
Quotient: the result of a division
Product: the result of a multiplication
Multiples: found by multiplying any number by positive integers
Factor: integers that multiply together to get another number

Integers, real and rational numbers

Rational – root word: ratio

Real numbers: $\frac{2}{3}$ stems from 2 | ($\frac{2}{3}$ of the whole)

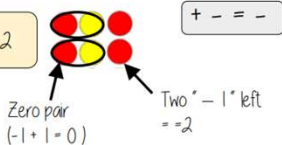
Irrational numbers: $\sqrt{2}$ the solution is a decimal that never ends and does not repeat

The square root of a negative is not a real number and cannot be found

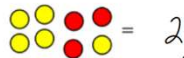
Directed number

Addition

$$2 + -4 = -2$$



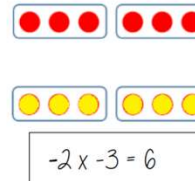
Subtraction



$$2 - -1 = 3$$



Multiplication



The act of making counters into their negative is turning them over

Divisions are the inverse operations



$$a = 5$$

$$b = -4$$

Brackets around negative substitutions helps remove calculation errors

$$2a - b = 2 \times 5 - (-4) = 10 + 4 = 14$$

HCF/LCM

1 is a common factor of all numbers

Common factors are factors two or more numbers share

HCF – Highest common factor

HCF of 18 and 30

18 | 1, 2, 3, 6, 9, 18

30 | 1, 2, 3, 5, 6, 10, 15, 30

HCF = 6

LCM – Lowest common multiple

LCM of 9 and 12

9 | 9, 18, 27, 36, 45, 54

12 | 12, 24, 36, 48, 60

LCM = 36

The first time their multiples match

Standard form

Any number between 1 and less than 10

$$A \times 10^n$$

Any integer

$$6 \times 10^5 + 8 \times 10^5$$

$$= 600000 + 800000$$

$$= 1400000$$

$$= 1.4 \times 10^6$$

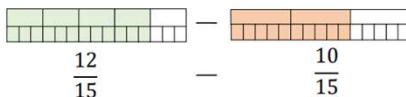
$$(1.5 \times 10^5) \div (0.3 \times 10^3)$$

$$15 \div 0.3 \times 10^5 \div 10^3$$

$$= 5 \times 10^2$$

Addition/ Subtraction of fractions

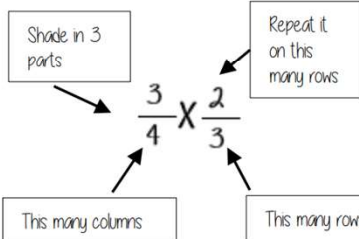
$$\frac{4}{5} - \frac{2}{3}$$



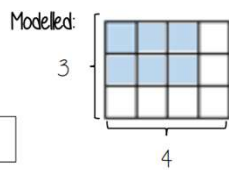
$$= \frac{2}{15}$$

Use equivalent fractions to find a common multiple for both denominators

Multiplication/ Division of fractions



$$\frac{3}{4} \times \frac{2}{3} = \frac{6}{12}$$



Total number of parts in the diagram

Remember to use reciprocals

$$2 \div \frac{3}{4}$$

$$= \frac{2}{1} \times \frac{4}{3}$$

Multiplying by a reciprocal gives the same outcome

Represented



$$= \frac{8}{3}$$