

CRADLE TO CAREER BRIDPORT



CRADLE
TO CAREER
BRIDPORT

BRIDPORT
DORSET

— WELCOME —

Building a brighter future
for every child in Bridport

Every Child. Every Family. Every Future.



EDUCATION



RELATIONSHIPS



SYSTEMS



OPPORTUNITY



TOGETHER



TOGETHER, WE CAN BUILD A BRIDPORT WHERE **EVERY CHILD** CAN THRIVE.

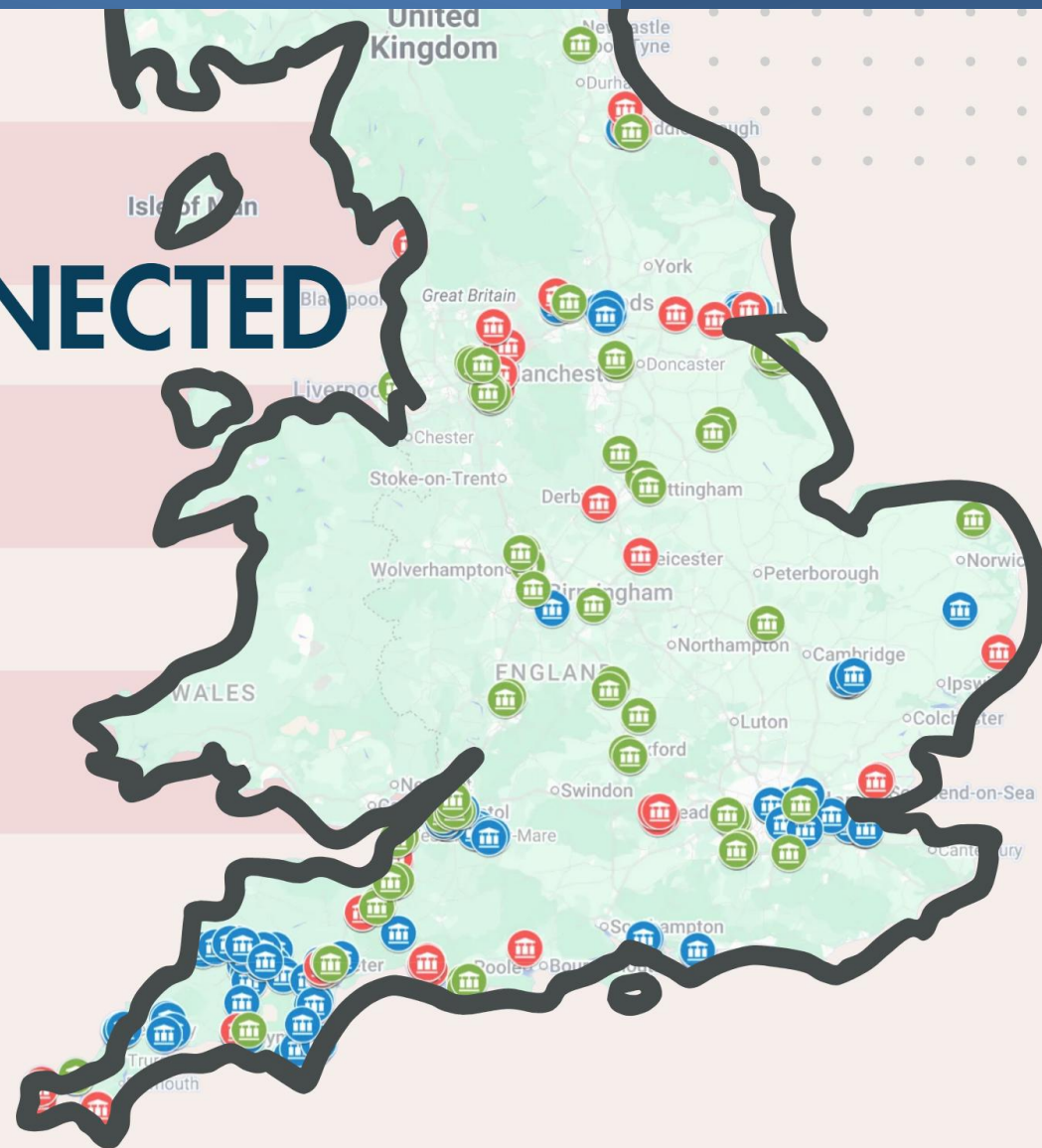


LOCALLY ROOTED NATIONALLY CONNECTED

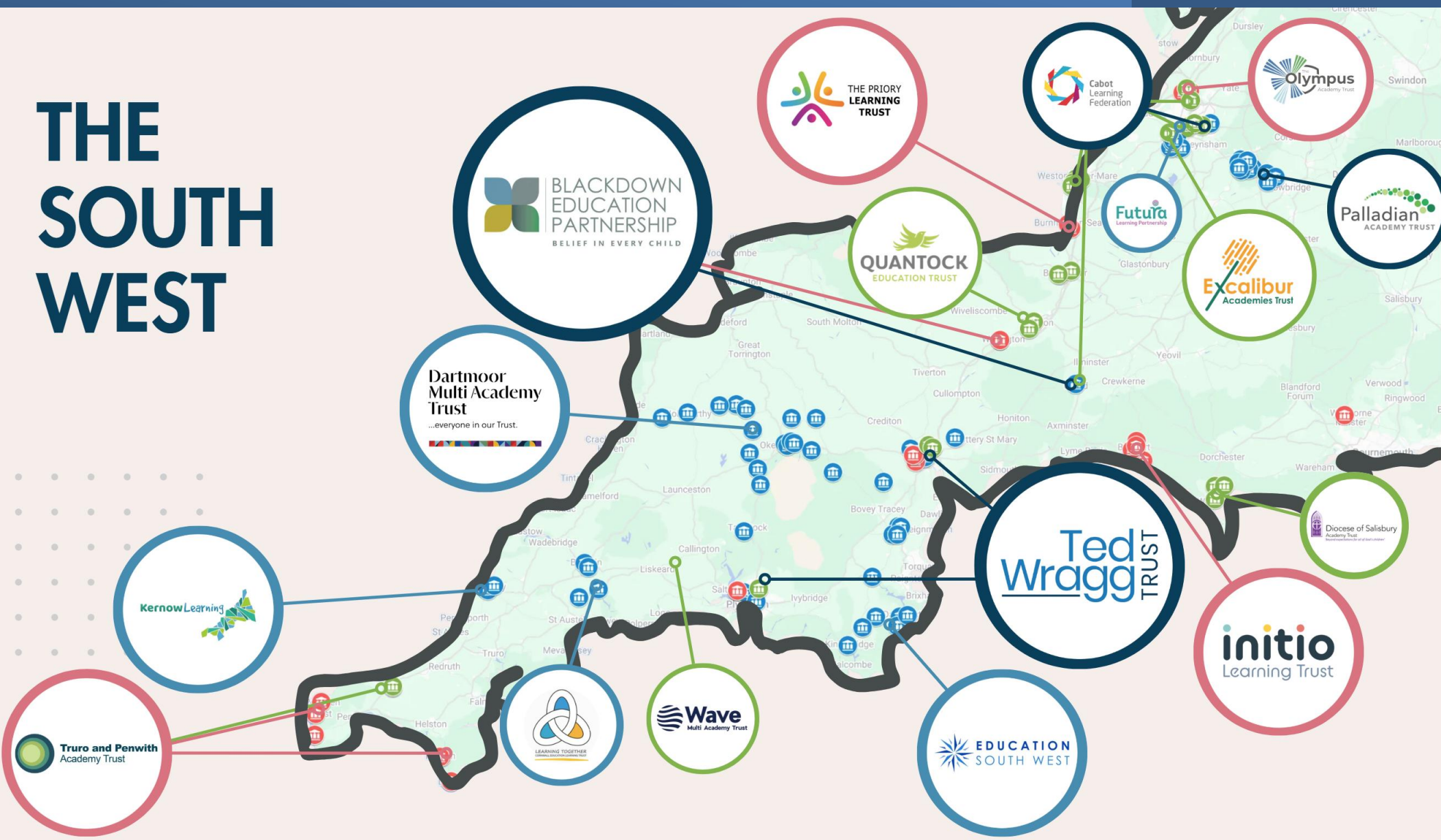
We are supporting a growing national network of schools to explore their organisations' potential as regenerative community institutions and establish effective place-based models of 'cradle to career' support in their own communities.

Our network currently comprises just shy of **300 schools**—serving approximately 150,000 children and young people across the country.

Click [→](#) to find out more about the work happening in each region.



THE SOUTH WEST



BRIDPORT CRADLE TO CAREER

BUILDING A COMMUNITY WHERE EVERY CHILD CAN THRIVE

RELATIONSHIPS + EDUCATION + COMMUNITY = OPPORTUNITY



1 RELATIONSHIPS ARE THE FOUNDATION

Children thrive when they are surrounded by strong, trusting relationships.



STRONG RELATIONSHIPS LEAD TO:



BUILT THROUGH

- ✓ Key adults and trusted relationships
- ✓ Family partnerships and parental voice
- ✓ Respect, inclusion and restorative practice
- ✓ Relationship-rich schools and communities
- ✓ Youth voice and participation

RELATIONSHIPS ARE THE ROOTS THAT MAKE EVERYTHING GROW.

2 OPPORTUNITY GAPS BEGIN EARLY

Disadvantage starts long before children enter school.

4.2 million children in poverty in the UK

1 million children living in destitution

55% more A&E visits for children in the most deprived areas

29% of children have untreated tooth decay in the least affluent areas (15% in the most affluent)

Children in the most deprived areas are **2x less likely** to reach the expected level of development

IN BRIDPORT

21% of children live in relative poverty (South ward)

£8,500 income gap between the richest and poorest areas

THE FIRST 1,000 DAYS CAN CHANGE THE NEXT 10,000.

3 EDUCATION ALONE CANNOT SOLVE IT

Schools are essential but not sufficient.



of a child's waking life from 0-18 is spent in school.

SCHOOLS ARE UNIQUELY POSITIONED



BUT SCHOOLS CANNOT DO IT ALONE.

Children need support with:



SCHOOLS ARE AT THE HEART OF THE COMMUNITY — CONNECTING CHILDREN TO OPPORTUNITY.

4 SYSTEMS MUST WORK TOGETHER

Children experience systems as one life – not separate services.

THE THREE PILLARS OF CRADLE TO CAREER



WORKING TOGETHER ACROSS BRIDPORT



STRONGER CONNECTIONS. BETTER SUPPORT. BRIGHTER FUTURES.

5 A LONG-TERM COMMITMENT TO PLACE

This is not a programme. It is community transformation.

- 📅 A 10-year plan for generational change
- 👥 Local leadership and shared ownership
- 📢 Community voice at every level
- 👤 Youth participation and empowerment
- 📈 Building local capacity and resilience
- 🤝 Standing together for every child

OUR VISION



TOGETHER, WE BUILD A BRIDPORT WHERE EVERY CHILD CAN THRIVE.

THE REALITY TODAY

- ✗ Child poverty and destitution
- ✗ Widening attainment gap
- ✗ Poor health and wellbeing
- ✗ Fragmented services
- ✗ Limited opportunities

THE CRADLE TO CAREER FRAMEWORK



STRONG RELATIONSHIPS
Children feel safe, known and valued.

+



QUALITY EDUCATION
Coherent learning from cradle to career.

+



CONNECTED SYSTEMS
Joined-up support for families.

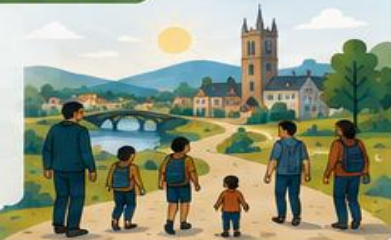
=



RELATIONSHIPS + EDUCATION + COMMUNITY = OPPORTUNITY

OUR SHARED FUTURE

- ✓ Improved outcomes for all children
- ✓ Stronger, healthier communities
- ✓ More opportunity and aspiration
- ✓ Economic growth and resilience
- ✓ A fairer future for Bridport



A 10-YEAR WHOLE-SYSTEM APPROACH. ONE COMMUNITY. ONE VISION. EVERY CHILD. EVERY FAMILY. EVERY FUTURE.



Bridport: A Town of Contrasts

Bridport is a town of contrasts, balancing a heritage-rich, retiree-friendly reputation with significant pockets of localized deprivation.



A Tale of Two Halves



32% of the population is over 65



15% of the population is under 18

Opportunities for young people vary greatly depending on their ward and socioeconomic background.

Child Poverty in Bridport South

21%

Child Poverty Rate

More than double the rate found in the more affluent West Bay area.



BRIDPORT SOUTH

21%



WEST BAY

9%



Tackling child poverty is essential to giving every child in Bridport the best start in life.

The £8,500 Income Gap

A significant income gap exists between the most deprived and most affluent areas.



Education & Youth Population



15% of the population is under 18

Targeted support is vital for this small but vulnerable demographic to ensure long-term community sustainability.



Early Years Support



School Achievement



Youth Engagement



Community Opportunities

Disadvantaged & SEN Progress Gaps



2024 GCSE data reveals SEN and disadvantaged students consistently lag behind in English and Maths progress.

ENGLISH PROGRESS



MATHS PROGRESS



Closing these gaps is key to improving life chances and building a fairer Bridport.

High Deprivation vs. High Homeownership

Despite heritage-industry roots, homeownership at 66% remains below the county average.



Homeownership Rate in Bridport



High deprivation alongside lower homeownership can limit wealth-building and long-term stability for many families.

Bridging the Gap: Our Approach

TARGETED SUPPORT

PROFESSIONAL DEVELOPMENT



Targeted support for children, young people and families



Professional development for educators and practitioners



Stronger partnerships across schools, services and communities



Working together for better outcomes for every child

Cradle to Career Interventions

Integrating Family Hub services and professional development to improve outcomes for at-risk youth.



Supporting every step of the journey.

Why It Matters



Stronger communities when every child can thrive.



Better life chances lead to a brighter future for Bridport.



Investing early reduces inequality and builds a resilient economy.



Closing the opportunity gap today, for a stronger Bridport tomorrow.

BRIDPORT'S OPPORTUNITY CHALLENGE

FROM EDUCATION TO EMPLOYMENT: CLOSING THE NEET GAP



BRIDPORT
DORSET

Too many young people are not in education, employment or training.
Together we can change this trajectory.

1 BRIDPORT COMPARED TO NATIONAL

Young People Not in Education, Employment or Training (NEET)
16-24 YEAR OLDS (Q4 2025)

BRIDPORT

ENGLAND

15%

VS

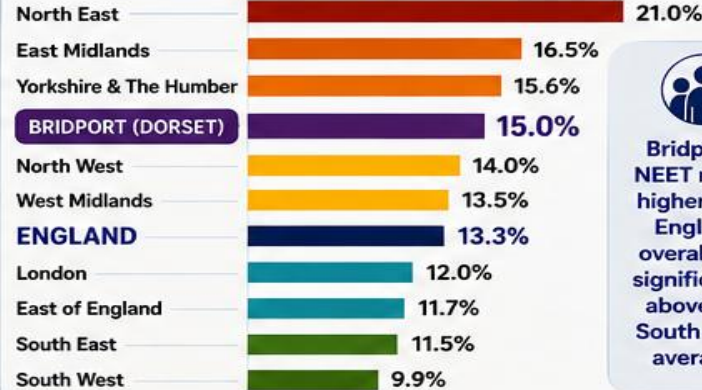
12.5%



Bridport's NEET rate sits above the national average, meaning more local young people risk missing out on pathways into further education, employment and training.

2 ENGLAND REGIONAL COMPARISON (2025)

NEET RATES (16-24 YEAR OLDS)



Bridport's NEET rate is higher than England overall and significantly above the South West average.

All estimates should be viewed alongside associated 95% confidence intervals. Confidence interval (95%) for the percentage NEET. Bridport Local estimate

3 WHY IT MATTERS

Young people who become NEET are more likely to experience:

- Poor mental wellbeing
- Lower lifetime earnings
- Long-term unemployment
- Reduced confidence and aspiration
- Greater dependence on services
- Intergenerational disadvantage



4 WHAT CREATES THE GAP?

Contributing factors include:

- Limited awareness of local opportunities
- Mental health pressures
- Poor transitions after Year 11
- SEND and additional needs
- Lack of work experience
- Fragmented support systems
- Transport barriers
- Low aspirations and confidence

5

HOW CRADLE TO CAREER RESPONDS

- EDUCATIONAL COHERENCE**
 - Careers education from primary onwards
 - Smooth transitions at every stage
 - Skills for life and lifelong learning
- RELATIONSHIP COHERENCE**
 - Trusted adults
 - Family partnerships
 - Youth voice
 - Belonging and inclusion for all
- SYSTEMS COHERENCE**
 - Employers and local businesses
 - Colleges and training providers
 - NHS and health partners
 - Dorset Council and public services
 - Voluntary and community sector
 - Early Help and support networks

OUR FUTURE AMBITION EVERY YOUNG PERSON:

- Ready for adulthood
- Connected to opportunity
- Supported into employment
- Equipped to thrive

TOGETHER WE CAN CHANGE THE STORY

THE CURRENT PICTURE

15%
NEET IN BRIDPORT



CRADLE TO CAREER ACTION

- Build relationships
- Improve education and skills
- Join up systems and services
- Create real opportunities
- Support every young person

SOURCE: Department for Education (2025), NEET Statistics Annual Brief. Estimates for 16-24 year olds from the Labour Force Survey (Q4 2025). Estimates should be considered alongside 95% confidence intervals.

Bridport estimate derived from local data and used to illustrate the scale of the challenge within the community.

TOGETHER, WE CAN BUILD A BRIDPORT WHERE EVERY CHILD CAN THRIVE.

SAFE KNOWN SUPPORTED INCLUDED SUCCESSFUL



BRIDPORT CRADLE TO CAREER

ONE COMMUNITY • ONE VISION • EVERY CHILD • EVERY FAMILY • EVERY FUTURE

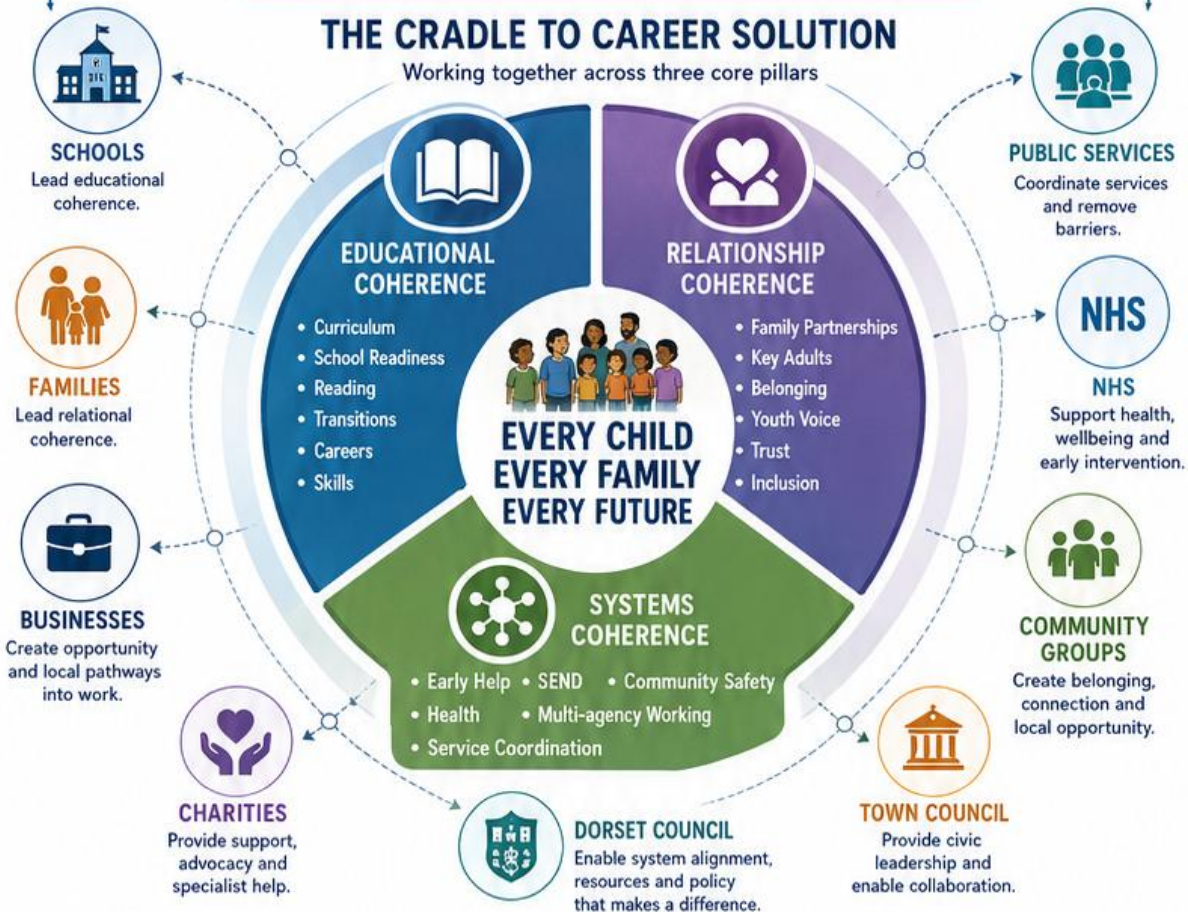
THE PROBLEMS WE MUST SOLVE



CHILDREN EXPERIENCE THESE PROBLEMS AS ONE LIFE.

THE CRADLE TO CAREER SOLUTION

Working together across three core pillars





THE CHALLENGES IN BRIDPORT THAT CRADLE TO CAREER SEEKS TO OVERCOME

Too many children face barriers that limit their potential. These challenges are connected – and they start early.



1. POVERTY & ECONOMIC HARDSHIP

Too many families are struggling financially.

4.2 million children in poverty in the UK

1 million children living in destitution

21% of children in Bridport South live in relative poverty

£8,500 income gap between the richest and poorest areas

Poverty impacts health, learning, wellbeing and life chances.

2. GAPS START EARLY

Disadvantage begins long before school.

55% more A&E visits for children in the most deprived areas

29% of children in the least affluent areas have untreated tooth decay (vs 15% in affluent areas)

2x obesity levels in reception aged children in most deprived areas

2x less likely to reach a good level of development by age 5

Early gaps in health and development create a harder start in life.

3. THE ACHIEVEMENT GAP GROWS

The longer we wait, the wider the gap becomes.

EARLY YEARS (Foundation Stage) KEY STAGE 2 KEY STAGE 4



The gap almost quadruples from early years to GCSE. In every classroom of 30 children, 12 will not meet the expected standard.



Lower attainment limits choices, confidence and future opportunities.

4. WELLBEING & MENTAL HEALTH PRESSURES

More children are struggling with their emotional health and wellbeing.

Rising anxiety, worry and low self-esteem among children and young people

Increased demand for mental health support and early help

Sleep, diet and lifestyle challenges impact learning and behaviour

Staff and families under pressure, leading to stress and burnout

Poor mental health affects learning, relationships and life outcomes.

OUR CHILDREN & YOUNG PEOPLE



Different challenges. Connected causes. Without change, potential is lost and communities suffer.

5. UNSAFE SPACES & COMMUNITY CONCERNS

Some areas of Bridport feel unsafe for children and young people.

Concerns about safety in Borough Gardens and other public spaces

Anti-social behaviour and lack of activities for young people

Children and families want to feel safe, respected and heard

Safety impacts attendance, wellbeing and community pride

Unsafe spaces reduce freedom, confidence and community connection.

6. LIMITED EMPLOYMENT PATHWAYS

Young people are unsure about their futures.

Limited awareness of local job opportunities and career pathways

Skills mismatch between education and local workforce needs

Low aspiration and confidence about future careers

Risk of long-term unemployment and economic inactivity

Without clear pathways, young people leave – or get left behind.

7. FRAGMENTED SERVICES & SYSTEMS

Families face a confusing system.

Services are not always joined up

Families have to repeat their story and navigate multiple agencies

Long waits for support

Early help not always reaching those who need it most

When systems don't connect, children fall through the gaps.

8. SEND & ADDITIONAL NEEDS CHALLENGES

Too many children with SEND do not get the right support, when they need it.

Rising numbers of children with additional needs

Long waiting times for assessments and support

Inconsistent provision and specialist support

Families feel stretched, unsure and unsupported

Delays and gaps in support affect learning, wellbeing and life chances.

WHY THIS MATTERS

Lower educational attainment

Poorer health and wellbeing

Reduced life opportunities

Greater cost to communities

Cycle of disadvantage continues

OUR SHARED VISION

Every child in Bridport is safe, known, supported and inspired to achieve. A community where families thrive and young people have real opportunities to succeed.



Different challenges. One solution: working together from cradle to career. STRONGER RELATIONSHIPS • COHERENT EDUCATION • CONNECTED SYSTEMS Together, we can give every child the best start and the best chance for a brighter future.



HOW WE OVERCOME THE BARRIERS IN BRIDPORT TOGETHER, FROM CRADLE TO CAREER

A 10-YEAR PLAN TO GIVE EVERY CHILD THE BEST START AND THE BEST CHANCE FOR THE FUTURE



OUR APPROACH: THREE PILLARS WORKING TOGETHER



1. EDUCATIONAL COHERENCE

A coherent, purposeful education from cradle to career

- ✓ Coherent curriculum from early years to post-18
- ✓ Strong transitions between every stage
- ✓ High quality teaching, reading and SEND support
- ✓ Skills for life, work and local opportunities
- ✓ Raising aspirations and ambition for all

GOAL: Every child has the knowledge, skills and confidence to thrive.



2. RELATIONSHIP COHERENCE

Strengthening the human fabric of schools and communities

- ✓ Key adults for every child
- ✓ Powerful partnerships with families
- ✓ Restorative, relationship-rich practice
- ✓ Inclusive culture rooted in respect
- ✓ Youth voice and meaningful participation

GOAL: Every child feels safe, known, valued and supported.



3. SYSTEMS COHERENCE

Building local ecosystems of support with schools at the heart

- ✓ Joined-up services around local needs
- ✓ Early help and support that is easy to access
- ✓ Stronger partnerships across sector
- ✓ Family, community and employer engagement
- ✓ Shared ownership and local leadership

GOAL: Every child and family gets the right support at the right time.

OUR 10-YEAR PLAN: FROM FOUNDATIONS TO FUTURE SUCCESS

1	2	3	4	5	6	7	8	9	10
FOUNDATION (Years 1-2)	DESIGN (Years 2-3)	BUILD CAPACITY (Years 3-4)	IMPLEMENT (Years 4-5)	EXPAND (Years 5-6)	INTEGRATE (Years 6-7)	INNOVATE (Years 7-8)	IMPACT (Years 8-9)	SUSTAIN (Years 9-10)	LEGACY (Year 10+)
<ul style="list-style-type: none"> • Listen to community and map needs • Build strong relationships and trust • Create clear shared vision and priorities 	<ul style="list-style-type: none"> • Co-design solutions with families, young people and partners • Design coherent curriculum and pathways • Plan joined-up services 	<ul style="list-style-type: none"> • Train and equip staff and partners • Embed relational practice • Develop local leadership and governance 	<ul style="list-style-type: none"> • Roll out key initiatives • Embed systems and routines • Focus on early years and school readiness 	<ul style="list-style-type: none"> • Extend support across all settings and ages • Strengthen employer and community links • Grow youth voice and participation 	<ul style="list-style-type: none"> • Deepen integrated working • Share data and insights to drive improvement • Align resources to local priorities 	<ul style="list-style-type: none"> • Test and scale what works • Drive innovation in learning and support • Adapt to emerging needs 	<ul style="list-style-type: none"> • Measure outcomes and impact • Reduce gaps in attainment and wellbeing • Strengthen economic and community impact 	<ul style="list-style-type: none"> • Embed sustainable funding and structures • Build local champions • Ensure long-term resilience 	<ul style="list-style-type: none"> • A strong, connected Bridport for future generations • Every child has the best start and best chance • A thriving, fair and inclusive community

CONTINUOUS: LISTENING • LEARNING • IMPROVING • WORKING TOGETHER

HOW WE MAKE IT HAPPEN

CROSS-CUTTING ENABLERS



POWERFUL PARTNERSHIPS

Families, schools, council, NHS, businesses and community working as equal partners.



EVIDENCE & INSIGHT

Using data and local insight to understand needs and measure what matters.



YOUTH VOICE & CO-PRODUCTION

Young people help shape decisions that affect their lives.



ALIGNING RESOURCES

Pooled budgets and resources focused on shared outcomes.



EQUITY & INCLUSION

Targeting support for those who need it most to close gaps.



OUR PRIORITY ACTION AREAS

EARLY YEARS & SCHOOL READINESS

Support from pregnancy to age 5 so children start school ready to learn.



LEARNING & ATTAINMENT

High quality teaching, reading, SEND support and smooth transitions.



WELLBEING & MENTAL HEALTH

Early help, emotional support and healthy lifestyles for all.



SAFER COMMUNITIES

Safer public spaces, positive activities and strong community connections.



CAREERS & OPPORTUNITIES

Local careers education, skills and employer pathways for all young people.

WHAT SUCCESS LOOKS LIKE

- ✓ More children start school ready and confident
- ✓ The attainment gap closes at every stage
- ✓ Improved health, wellbeing and resilience
- ✓ Safer communities with more opportunities
- ✓ More young people in education, training or good employment
- ✓ Stronger families and reduced financial hardship
- ✓ A thriving local economy that works for all
- ✓ Bridport is a place where every child can thrive



OUR FINAL GOAL



EVERY CHILD IN BRIDPORT IS SAFE, KNOWN, SUPPORTED AND INSPIRED TO ACHIEVE.

A COMMUNITY WHERE FAMILIES THRIVE AND YOUNG PEOPLE HAVE REAL OPPORTUNITIES TO SUCCEED.

THIS IS OUR COMMITMENT



One community Shared purpose Long-term commitment Better futures for all

TOGETHER, FROM CRADLE TO CAREER

We can give every child the best start and the best chance for a brighter future.



STRONGER RELATIONSHIPS • COHERENT EDUCATION • CONNECTED SYSTEMS

TOGETHER, WE CAN BUILD A BRIDPORT WHERE EVERY CHILD CAN THRIVE.



PAUSE & REFLECT

What makes Bridport such a brilliant place to grow up?

Looking at the data what worries you most about the future for children in Bridport?

Please discuss at your tables.



EDUCATION



RELATIONSHIPS



SYSTEMS



OPPORTUNITY



TOGETHER

1. Putting Relationships First

Strong relationships are the foundation of thriving individuals, families, and communities.



We are wired for connection.



Relationships shape wellbeing and success.



Communities thrive when relationships are strong.



When we put relationships first, we build trust, connection and a sense of belonging for everyone.

2. Why Relationships Matter

Relationships are not a 'nice to have'—they are essential.



Better Wellbeing

Strong relationships improve mental and physical health.



Improved Outcomes

Children, young people and adults do better in school, work and life.



Resilience

Supportive relationships help us through tough times.



Stronger Communities

Connection reduces isolation and builds safer, more caring communities.



Long-term Impact

Positive relationships create better life chances across generations.



Relationships are the key that unlocks human potential.

3. The Power of Relationships in Action

Positive relationships make a difference at every level.



Early Years

Nurturing relationships build secure attachment and a strong start in life.



Education

Supportive relationships with teachers and peers boost confidence, learning and engagement.



Youth Development

Mentoring and positive role models help young people thrive and make positive choices.



Workplaces

Good relationships improve teamwork, wellbeing and productivity.



Communities

Connection across all ages creates inclusive, vibrant communities.



Relationships transform lives—at home, in school, at work and in our communities.

4. Building Blocks of Strong Relationships

Everyday actions build the relationships that change lives.



Listen Give people your full attention.



Show You Care Small acts of kindness make a big difference.



Be Reliable Do what you say you'll do.



Be Respectful Value others and treat everyone with respect.



Spend Time Together Quality time builds stronger bonds.



Strong relationships are built through consistent, positive interactions over time.

5. Creating a Relationships-Rich Culture

It takes the right conditions for relationships to grow and thrive.



Leadership that models and prioritises relationships.



Shared Values and a clear commitment to relationship-centred practice.



Open Communication that is honest, two-way and inclusive.



Supportive Environments where everyone feels safe and valued.



Time and Space to build, protect and invest in relationships.



Culture is shaped by what we value, what we do and how we treat each other every day.

6. Overcoming Barriers

Many things get in the way of strong relationships.



Time pressures Busy workloads leave little time to connect.



Silos and systems Organisational barriers can create distance.



Lack of communication Assumptions and unclear communication cause disconnect.



Stress and burnout High stress makes it harder to build relationships.



We can remove barriers by making relationships a priority and working together.

7. Relationships in Practice

Practical ways to put relationships first in everyday work.



Start with Relationships

Take time to build trust from the very beginning.



Co-Create Together

Involve people in decisions that affect them.



Celebrate Strengths

Focus on abilities, not just challenges.



Keep in Touch

Regular check-ins show you care.



Reflect and Learn

Learn together and keep improving.



Small, intentional actions create strong, lasting relationships.

8. The Ripple Effect

When we put relationships first, the benefits spread far and wide.



Stronger Individuals



Stronger Families



Stronger Organisations



Stronger Communities



Stronger Society



The impact of relationships today creates a better tomorrow for everyone.



Relationships are the ripple that creates lasting change.

9. Our Commitment

We all have a role to play in putting relationships first.



We will value people. We see the person, not just the role.



We will build connection. We take time to listen, understand and support.



We will work together. We collaborate across boundaries for the best outcomes.



We will keep going. We will nurture relationships for the long term.



When we put relationships first, we build a better world for all.



EDUCATIONAL COHERENCE

A coherent, purposeful education from cradle to career



OUR VISION

Every child experiences a connected learning journey that builds skills, confidence and purpose for life.

A SEAMLESS LEARNING JOURNEY



BUILDING KNOWLEDGE, SKILLS AND CHARACTER THROUGH EVERY STAGE

WHAT THIS LOOKS LIKE



COHERENT CURRICULUM
Aligned learning from EYFS to Post-18 with clear progression and shared goals.



STRONG TRANSITIONS
Smooth moves between settings and key stages with consistent support.



AMBITION FOR ALL
High expectations, rich opportunities and pathways to meaningful destinations.



SKILLS FOR OUR COMMUNITY
Working with local employers to build the skills Bridport needs now and in the future.

KEY INITIATIVES

- Reading curriculum project KS2-3 (2025-26)
- Extending curriculum coherence from EYFS to Post-18
- Careers education linked to local employment opportunities
- Real-world learning and employer partnerships

WHY IT MATTERS



The attainment gap grows over time.



19.2 months behind by KS4.



Only 1 of those 12 disadvantaged pupils passes English & Maths GCSE.



Coherent education changes life trajectories.

CONNECTED LEARNING. REAL OPPORTUNITIES. BRIGHTER FUTURES.



RELATIONSHIP COHERENCE

Strengthening the human fabric of schools and communities



OUR VISION

Every child is known, valued and supported by strong, trusting relationships.

POWERFUL RELATIONSHIPS CREATE:



SAFETY & TRUST



BELONGING & CONNECTION



WELLBEING & RESILIENCE



CONFIDENCE & AMBITION

HOW WE BUILD RELATIONSHIP COHERENCE



KEY ADULTS
Every child has a trusted adult who knows them well.



FAMILY PARTNERSHIPS
We work with families as equal partners and experts in their children.



RELATIONAL PRACTICE
Restorative, respectful and consistent approaches in every interaction.



INCLUSIVE CULTURE
Kindness, respect and high expectations for every child and adult.



YOUTH VOICE
Children and young people shape decisions that affect them.

WHAT IT LOOKS LIKE



Listening deeply



Working together



Honouring every family



Building trust over time



Championing strengths



Celebrating success together

THE IMPACT



- ✓ Stronger relationships
- ✓ Better attendance & engagement
- ✓ Improved wellbeing
- ✓ Higher achievement
- ✓ Stronger, more resilient communities

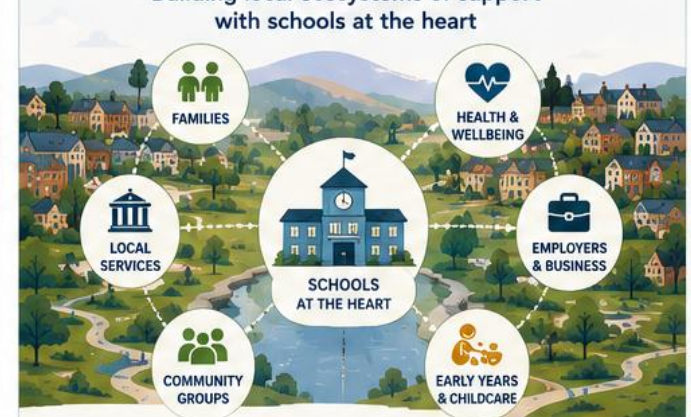


RELATIONSHIPS ARE THE ROOTS THAT MAKE EVERYTHING GROW.



SYSTEMS COHERENCE

Building local ecosystems of support with schools at the heart



OUR VISION

All services work together around local needs so every child and family can access the right support at the right time.

WHAT THIS LOOKS LIKE



JOINED-UP SUPPORT
Services coordinate to remove barriers and make help easy to access.



COMMUNITY LISTENS
We understand local needs and prioritise what matters most.



SHARED OWNERSHIP
Schools, council, health, businesses and communities lead together.



STRONG LOCAL CAPACITY
Building the skills, resources and relationships to solve local challenges.

PRIORITIES FOR 2025-26



Co-designed solutions to Borough Gardens safety concerns



Multi-agency coherence group



Stronger employer partnerships



Expanded SEND and early-help support



Youth voice shaping community decisions

THE RESULTS WE AIM FOR



Safe & supported children



Healthy, thriving communities



More opportunity for all



Stronger local economy



A fairer future for Bridport



STRONG CONNECTIONS. BETTER SUPPORT. BRIGHTER FUTURES FOR EVERY CHILD.



PAUSE & DISCUSS

Which coherence is Bridport strongest ? can you give examples?

Which needs the greatest attention?

Please discuss at your tables.



EDUCATION



RELATIONSHIPS



SYSTEMS



OPPORTUNITY



TOGETHER

1. Why Culture Matters

Engagement isn't just about activities—it's about creating a culture where every voice is valued, relationships are built, and people want to get involved.



A strong culture of engagement leads to:



Stronger relationships



Greater trust and belonging



Better decisions and outcomes



More active communities



Sustainable change

2. The Foundations of an Engagement Culture

Build the right conditions for engagement to thrive.



3. What Engagement Looks Like

Engagement happens in many ways and at every level.



Inform

Share clear, accessible information.

Consult

Ask for input and listen to feedback.

Involve

Work together throughout the process.

Collaborate

Partner in decision-making and action.

Empower

Support people to lead and drive change.



The goal: Move from informing to empowering.



4. Building Blocks of an Engaged Culture

Everyday actions that build a culture of engagement.



Lead by Example

Show commitment and participate alongside others.



Listen Deeply

Understand community needs, hopes and concerns.



Be Consistent

Keep people informed and involved over time.



Celebrate & Learn

Recognise contributions and learn from the process.



Small, consistent actions create lasting culture.

5. Creating Inclusive Engagement

Remove barriers and make space for everyone.



Be Accessible

Consider language, location, timing and formats.



Support Participation

Provide child care, transport, and other supports where needed.



Reach Out

Proactively invite voices that are often missed.



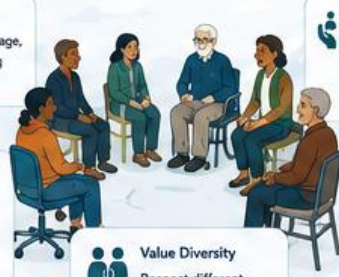
Ensure Equity

Address barriers so everyone has a fair chance to participate.



Value Diversity

Respect different experiences, cultures and perspectives.



6. From Engagement to Impact

Engagement should lead to meaningful change.



Engage

Involve the right people.



Understand

Gather insights and identify priorities.



Act

Make decisions and take action.



Evaluate

Check progress and learn together.



Improve

Adapt and keep building a better future.



When people see impact, trust grows and engagement deepens.

7. Leadership for Engagement

Leaders set the tone for a culture of engagement.



Be Visible

Show up in the community and listen.



Empower Others

Share power and support community leadership.



Be Authentic

Build trust through honesty and humility.



Stay Committed

Champion engagement



8. Signs of a Strong Engagement Culture

You'll know your culture is strong when...



People feel welcome, respected and heard.



Trust is built and maintained.



Conversations are open and honest.



Diverse voices shape decisions and actions.



People see real results from their involvement.



9. Keep Growing the Culture

Culture is never "done." Keep nurturing it.



Reflect

What's working well? What can improve?



Adapt

Be flexible and responsive to change.



Connect

Build relationships across the community.



Look Ahead

Keep your head





CRADLE TO CAREER BRIDPORT EDUCATIONAL COHERENCE

A coherent, purposeful education from cradle to career



OUR VISION

Every child experiences a connected learning journey that builds skills, confidence and purpose for life.



EARLY YEARS 0-5



PRIMARY 5-11



SECONDARY 11-16



POST-16 16-18



ADULTHOOD & EMPLOYMENT 18+

A SEAMLESS LEARNING JOURNEY

WHY IT MATTERS



The attainment gap grows over time.



19.2 months lagged by KS4



Coherent education changes life trajectories.



Only 1 of those Ambitious 4



12 disaffected or disengaged pupils pass English & Maths.



COHERENT CURRICULUM
Aligned learning from EYFS to Post-18 with clear progression and shared goals.



STRONG TRANSITIONS
Smooth moves between settings and key stages with consistent support.



AMBITION FOR ALL
High expectations, rich opportunities and pathways to meaningful destinations.



SKILLS FOR OUR COMMUNITY
Working with local employers to build the skills Bridport needs now and in the future.

KEY INITIATIVES (starting now)

- Reading curriculum project KS2-3 (2025-26)
- Extending curriculum coherence from EYFS to Post-18
- Careers education linked to local employment opportunities
- Real-world learning and employer partnerships

WHAT THIS LOOKS LIKE

OUR 10-YEAR PLAN



1 FOUNDATION (Years 1-2)

Build the vision, map the journey, and align priorities across settings.



2 DESIGN (Years 2-3)

Co-create curriculum frameworks and progression pathways.



3 PILOT (Years 3-4)

Pilot reading & curriculum projects across key stages and settings.



4 STRENGTHEN (Years 4-5)

Embed effective practice and strengthen teacher development.



5 EXPAND (Years 5-6)

Extend coherence across EYFS to Post-18 and all schools.



6 PARTNER (Years 6-7)

Deepen employer partnerships and real-world learning opportunities.



7 INTEGRATE (Years 7-8)

Fully integrated curriculum, careers and community pathways.



8 INNOVATE (Years 8-9)

Drive innovation, personalisation and leadership at all levels.



9 IMPACT (Years 9-10)

Measure impact, close gaps and celebrate success.



10 SUSTAIN (Year 10+)

Sustain excellence and adapt to future community needs.

OUR FINAL GOAL



Every child has the skills, knowledge and confidence to thrive in life, learning and work.



CRADLE TO CAREER BRIDPORT RELATIONSHIP COHERENCE

Strengthening the human fabric of schools and communities



OUR VISION

Every child is known, valued and supported by strong, trusting relationships.

POWERFUL RELATIONSHIPS CREATE:



SAFETY & TRUST



BELONGING & CONNECTION



WELLBEING & RESILIENCE



CONFIDENCE & AMBITION

HOW WE BUILD RELATIONSHIP COHERENCE



KEY ADULTS

Every child has a trusted adult who knows them well.



FAMILY PARTNERSHIPS

We work with families as equal partners and experts in their children.



RELATIONAL PRACTICE

Research, respectful and consistent approaches in every interaction.



INCLUSIVE CULTURE

Kindness, respect and high expectations for every child and adult.



YOUTH VOICE

Children and young people shape decisions that affect them.

THE IMPACT



Stronger relationships



Better attendance & engagement



Improved wellbeing



Higher achievement



Stronger, more resilient communities

OUR 10-YEAR PLAN



1 FOUNDATION (Years 1-2)

Build a shared vision and relationships charter.



2 AWARENESS (Years 2-3)

Understand our strengths and needs through listening.



3 BUILD CAPACITY (Years 3-4)

Train and equip staff, families and partners in relational practice.



4 EMBED PRACTICE (Years 4-5)

Embed key adult systems and restorative approaches.



5 FAMILY PARTNERSHIP (Years 5-6)

Deepen partnership with families and strengthen two-way communication.



6 COMMUNITY CONNECTION (Years 6-7)

Broaden connections across schools and community organisations.



7 YOUTH LEADERSHIP (Years 7-8)

Empower young people to lead and influence change.



8 CULTURE OF CARE (Years 8-9)

Embed a culture where relationships drive every decision.



9 MEASURE & IMPROVE (Years 9-10)

Measure impact and continually improve practices and outcomes.



10 SUSTAIN & GROW (Year 10+)

Sustain and grow relational culture across generations.

OUR FINAL GOAL



Every child feels safe, known, valued and supported to belong and thrive.

RELATIONSHIPS ARE THE ROOTS THAT MAKE EVERYTHING GROW.



CRADLE TO CAREER BRIDPORT SYSTEMS COHERENCE

Building local ecosystems of support with schools at the heart



OUR VISION

All services work together around local needs so every child and family can access the right support at the right time.

WHAT THIS LOOKS LIKE



JOINED-UP SUPPORT

Services coordinate to remove barriers and make help easy to access.



COMMUNITY LISTENS

We understand local needs and prioritise what matters most.



SHARED OWNERSHIP

Schools, council, health, businesses and communities lead together.



STRONG LOCAL CAPACITY

Building the skills, resources and relationships to solve local challenges.

PRIORITIES FOR 2025-26



Co-designed solutions to Borough Gardens safety concerns



Multi-agency coherence group



Stronger employer partnerships



Expanded SEND and early-help support



Youth voice shaping community decisions



1 LISTEN & MAP (Years 1-2)

Deep listening and mapping needs, strengths and assets.



2 BUILD PARTNERSHIPS (Years 2-3)

Create strong partnerships and shared governance structures.



3 ALIGN SERVICES (Years 3-4)

Align priorities, policies and resources around children.



4 REMOVE BARRIERS (Years 4-5)

Identify and remove system barriers to access and participation.



5 COORDINATE SUPPORT (Years 5-6)

Develop integrated pathways and early-help systems.



6 INVEST IN PEOPLE (Years 6-7)

Build workforce capacity and community leadership.



7 DEEPEN IMPACT (Years 7-8)

Strengthen data, learning and continuous improvement.



8 SCALE WHAT WORKS (Years 8-9)

Scale proven programmes and partnership solutions.



9 SUSTAIN & ADAPT (Years 9-10)

Sustain success and adapt to future community needs.



10 LEGACY (Year 10+)

Leave a legacy of connected systems that endure.

OUR FINAL GOAL



Safe, supported children and families with brighter futures and a stronger Bridport for everyone.



BUSINESS COHERENCE

Employers Building Opportunity

Bridport's economy cannot thrive if its young people cannot thrive.

WHY BUSINESSES MATTER

Current challenges:

- Limited local career pathways
- Skills mismatch
- Low aspirations
- Young people leaving the area
- Recruitment difficulties

WHAT BUSINESSES CAN PROVIDE

- Work experience
- Mentoring
- Workplace visits
- Apprenticeships
- Curriculum input
- Enterprise projects

OUR 10-YEAR PLAN

YEARS 1-3 Build Relationships	YEARS 4-7 Create Pathways	YEARS 8-10 Transform Opportunity
<ul style="list-style-type: none"> Employer network expansion Business advisory board Careers events Workplace visits 	<ul style="list-style-type: none"> Apprenticeship expansion Skills mapping Sector pathways Industry mentors 	<ul style="list-style-type: none"> Every young person has employer contact Clear career pathways Increased local employment Reduced skills shortages

SUCCESS LOOKS LIKE

- More local employment
- Stronger economy
- Higher aspirations
- Reduced youth unemployment
- Talent retained in Bridport



YOUR ROLE: Open doors, share expertise, invest in our young people and local future.



CHARITY COHERENCE

Strengthening the Safety Net

No child should fall through the gaps.

WHY CHARITIES MATTER

Many families face:

- Poverty
- Mental health pressures
- Isolation
- SEND challenges
- Food insecurity
- Family stress

WHAT CHARITIES BRING

- Trusted relationships
- Community knowledge
- Flexible support
- Advocacy
- Compassion
- Innovation

OUR 10-YEAR PLAN

YEARS 1-3 Connect Services	YEARS 4-7 Coordinate Support	YEARS 8-10 Community Resilience
<ul style="list-style-type: none"> Community mapping Referral pathways Shared priorities 	<ul style="list-style-type: none"> Integrated family support Community hubs Joint delivery models 	<ul style="list-style-type: none"> Sustainable support networks Peer leadership Coimnaitiy ownership

SUCCESS LOOKS LIKE

- Families supported earlier
- Reduced crisis demand
- Better wellbeing
- Stronger community resilience
- No wrong door for families



YOUR ROLE: Be a trusted partner, champion families and ensure no one is left behind.



PUBLIC SERVICE COHERENCE

Joined-Up Services Around Children

Children experience one life – not separate services.

WHY PUBLIC SERVICES MATTER

Current challenges:

- Fragmented systems
- Long waiting times
- Repeated assessments
- Multiple referrals
- Poor coordination

CORE PARTNERS

- Schools
- NHS
- Dorset Council
- Police
- Family Services
- Housing

OUR 10-YEAR PLAN

YEARS 1-3 Align	YEARS 4-7 Integrate	YEARS 8-10 Transform
<ul style="list-style-type: none"> Shared vision Shared data Common priorities 	<ul style="list-style-type: none"> Multi-agency teams Early help pathways Coordinated intervention 	<ul style="list-style-type: none"> Whole-system approach Prevention first Community-led design

SUCCESS LOOKS LIKE

- Faster support
- Reduced duplication
- Better outcomes
- Lower costs
- Families tell their story once



YOUR ROLE: Work together, remove barriers and focus on early help and prevention.



COMMUNITY COHERENCE

Every Resident Has a Role

A community raises a child.

WHY COMMUNITY MATTERS

Children grow through:

- Neighbourhoods
- Sports clubs
- Arts organisations
- Faith groups
- Public spaces
- Older generations

WHAT COMMUNITIES PROVIDE

- Belonging
- Connection
- Opportunity
- Safety
- Identity
- Hope

OUR 10-YEAR PLAN

YEARS 1-3 Listen	YEARS 4-7 Participate	YEARS 8-10 Own
<ul style="list-style-type: none"> Youth voice Community conversations Asset mapping 	<ul style="list-style-type: none"> Volunteer networks Community projects Shared leadership 	<ul style="list-style-type: none"> Community-led initiatives Youth leadership Local stewardship

SUCCESS LOOKS LIKE

- Safer neighbourhoods
- Stronger social connections
- Greater civic pride
- Reduced isolation
- Young people feel they belong



YOUR ROLE: Get involved, look out for each other and help create a place where all children belong and thrive.



OUR SHARED GOAL

EVERY CHILD · EVERY FAMILY · EVERY FUTURE

Safe · Known · Supported · Educated · Healthy · Confident · Ready for Life

When we work together from cradle to career, Bridport is a place where every child can thrive.



YOUR COMMITMENT

What can your organisation contribute?

Time • Expertise • Networks • Opportunities • Resources

Please discuss at your tables.



EDUCATION



RELATIONSHIPS



SYSTEMS



OPPORTUNITY



TOGETHER

Next Steps

Talk to **one other person** who is not here to about C2C

Ask if they can support and be involved

Call to action – From today's meeting we will develop groups to work on aspects of C2C be an active part of this

Every Child. Every Family . Every Future



EDUCATION



RELATIONSHIPS



SYSTEMS



OPPORTUNITY



TOGETHER

Together, We Can Build — a Better Bridport —



CRADLE
TO CAREER
BRIDPORT

Every Child. Every Family. Every Future.



Thank you for being part of this journey.



Please stay connected, share your ideas
and help **shape the future.**



EDUCATION



RELATIONSHIPS



SYSTEMS



OPPORTUNITY



TOGETHER

— GET INVOLVED — CRADLE TO CAREER BRIDPORT



BRIDPORT
DORSET



Website:
www.colfox.org/cradletocareer



Email:
office@colfox.dorset.sch.uk



The Sir John Colfox Academy
Bridport, Dorset



EDUCATION



RELATIONSHIPS



SYSTEMS



OPPORTUNITY



TOGETHER