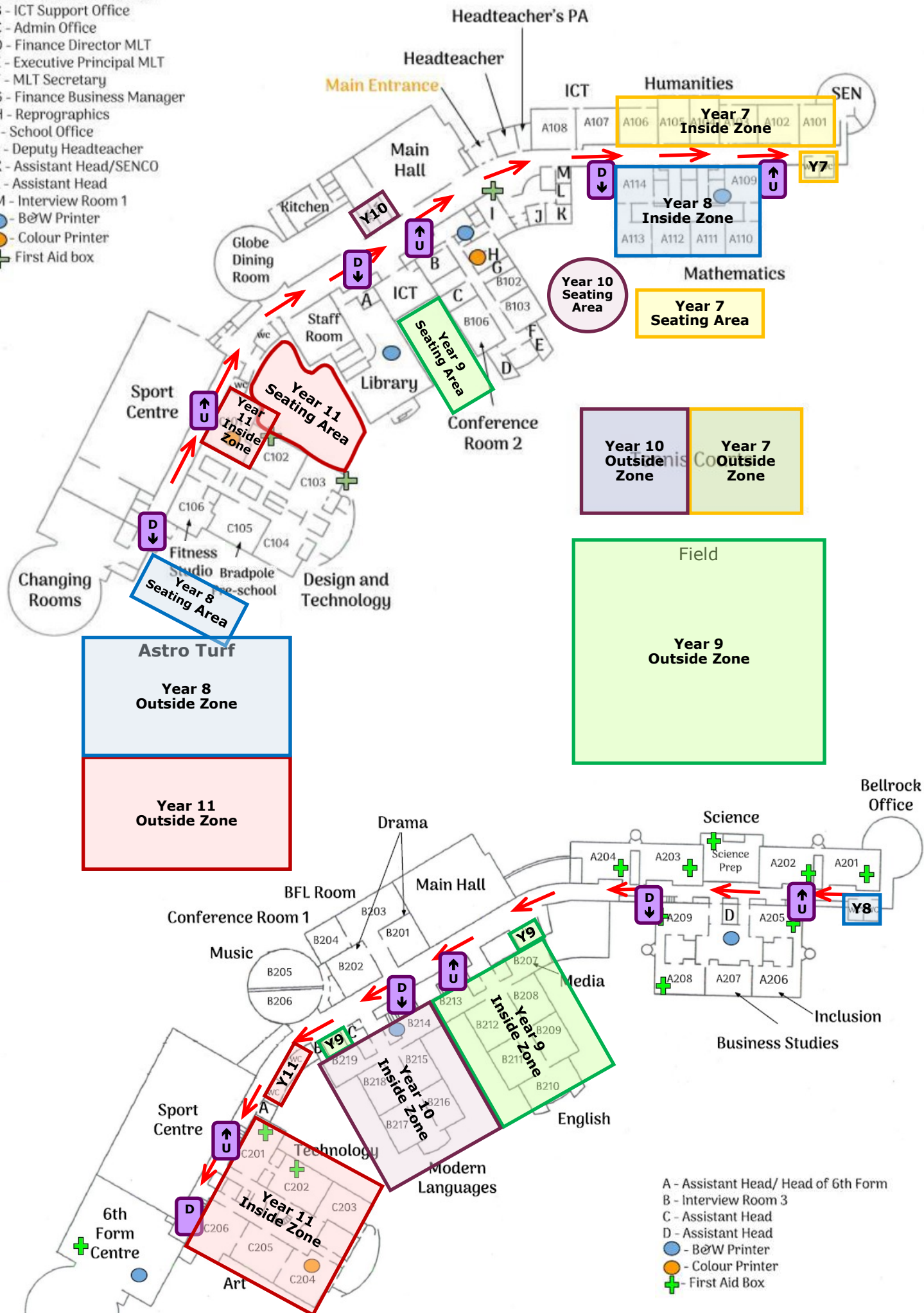


- A - Director of Options, Careers and Vocational Education
- B - ICT Support Office
- C - Admin Office
- D - Finance Director MLT
- E - Executive Principal MLT
- F - MLT Secretary
- G - Finance Business Manager
- H - Reprographics
- I - School Office
- J - Deputy Headteacher
- K - Assistant Head/SENCO
- L - Assistant Head
- M - Interview Room 1
- B&W Printer
- Colour Printer
- ⊕ First Aid box



**School Map with all Year Group Zones**